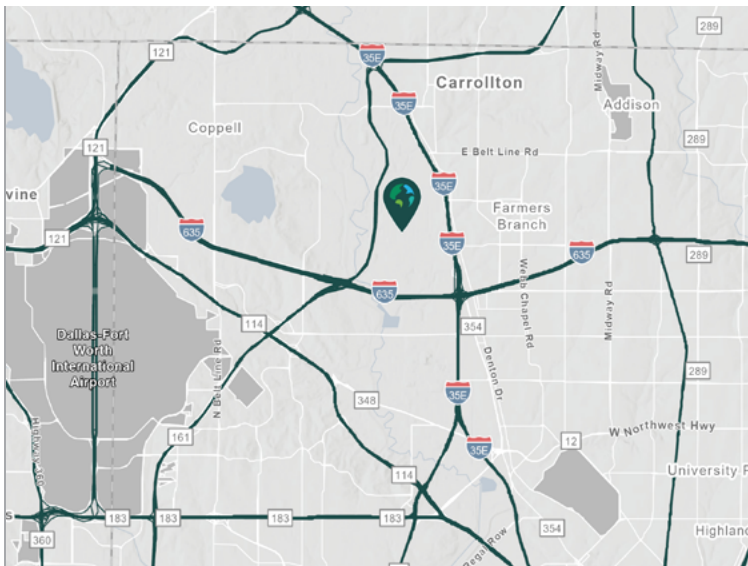


180,841 SF

**13700 Benchmark Drive
Farmers Branch, TX 75234**

Prologis Valwood 3



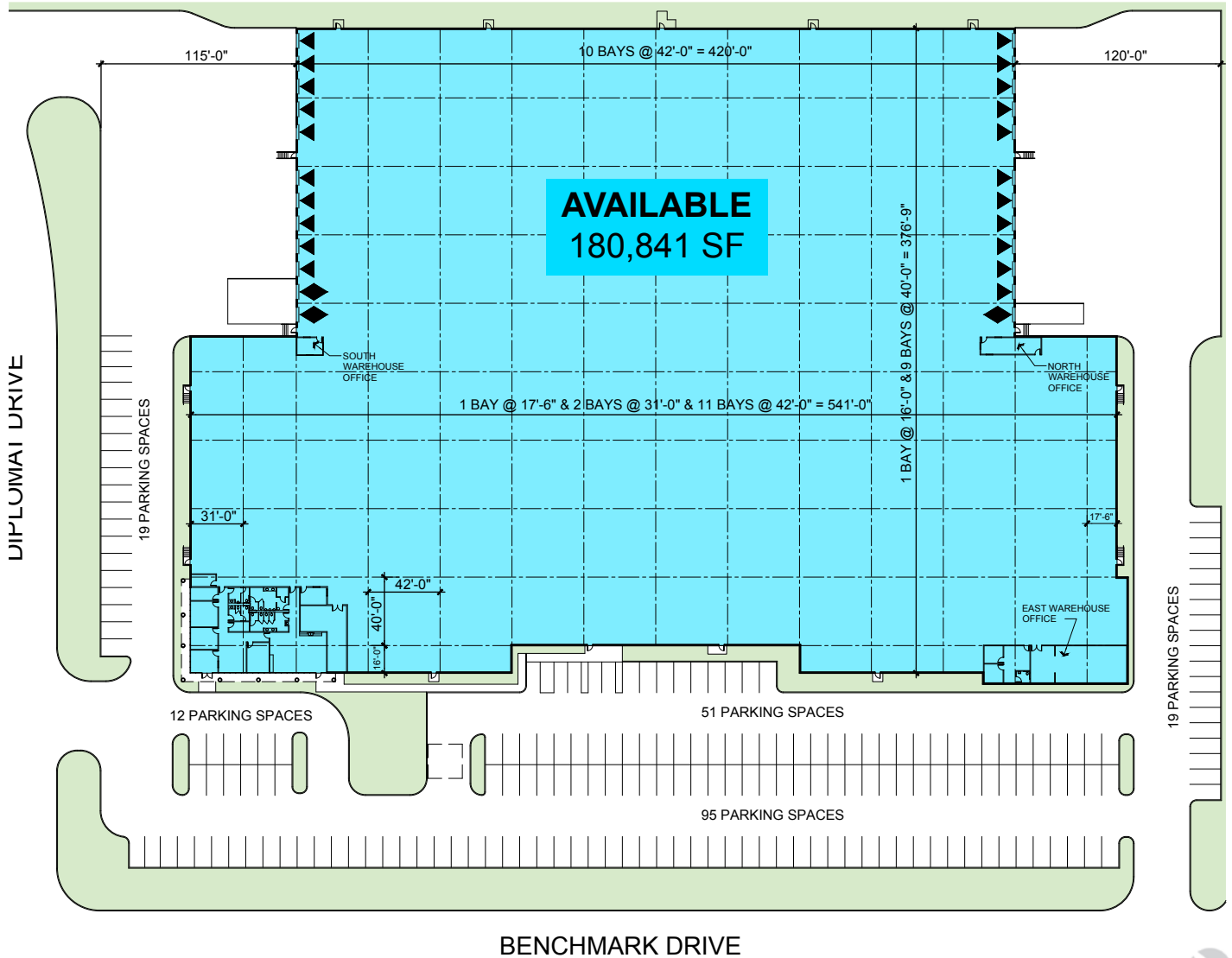
- Easy access to major thoroughfares including President George Bush Turnpike, I-35E, and I-635
- Located at the NW corner of Benchmark Drive and Diplomat Drive
- Stand alone building

Property Features

| | |
|---------------------|-------------|
| Available Space | 180,841 SF |
| Office SF | 4,645 SF |
| Warehouse Office SF | 2,422 SF |
| Clear Height | 30' |
| Column Spacing | 42' x 40' |
| Dock Doors | 21 |
| Drive-in Doors | 3 |
| Car Parking Spaces | 196 |
| Sprinkler | ESFR |
| Truck Courts | 115' - 120' |



Unlock the full potential of your warehouse with one strategic, single-source partner.



Cushman & Wakefield
Brett Owens, SIOR
 brett.owens@cushwake.com
 ph +1 972 663 9794
 cell +1 214 207 8584

Cushman & Wakefield
Clayton Johnson
 clayton.johnson@cushwake.com
 ph +1 972 763 4171
 cell +1 469 834 9060

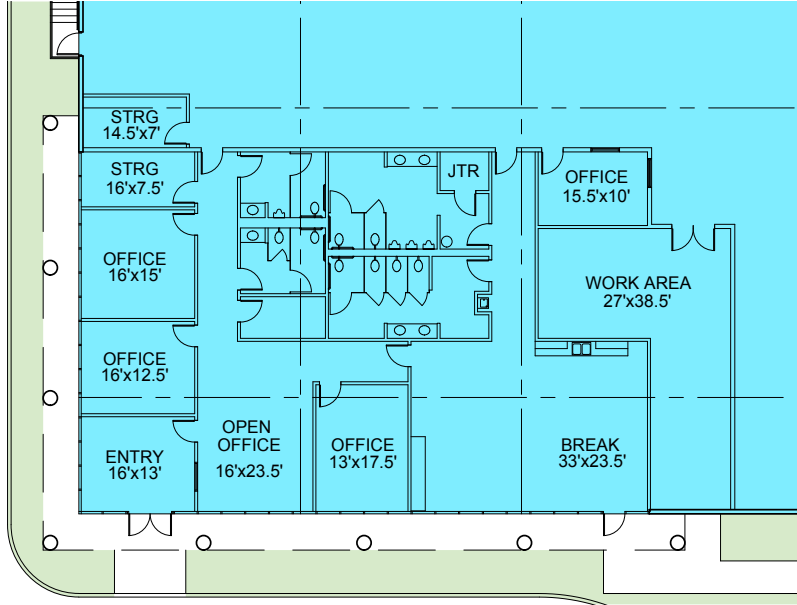
Prologis
Mitch Pruitt
 mpruitt@prologis.com
 ph +1 972 884 9221
 cell +1 214 518 9292
 prologis.com



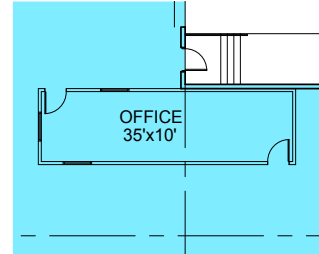
Unlock the full potential of your warehouse with one strategic, single-source partner.



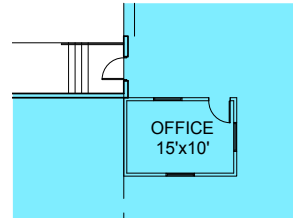
Main Office | 4,645 SF



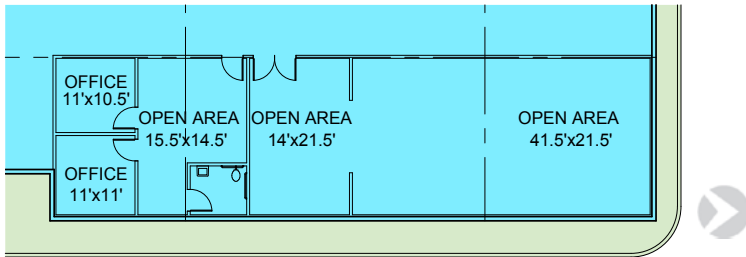
North Warehouse Office | 379 SF



South Warehouse Office | 172 SF



East Warehouse Office | 1,871 SF



Cushman & Wakefield
Brett Owens, SIOR
 brett.owens@cushwake.com
 ph +1 972 663 9794
 cell +1 214 207 8584

Cushman & Wakefield
Clayton Johnson
 clayton.johnson@cushwake.com
 ph +1 972 763 4171
 cell +1 469 834 9060

Prologis
Mitch Pruitt
 mpruitt@prologis.com
 ph +1 972 884 9221
 cell +1 214 518 9292
 prologis.com