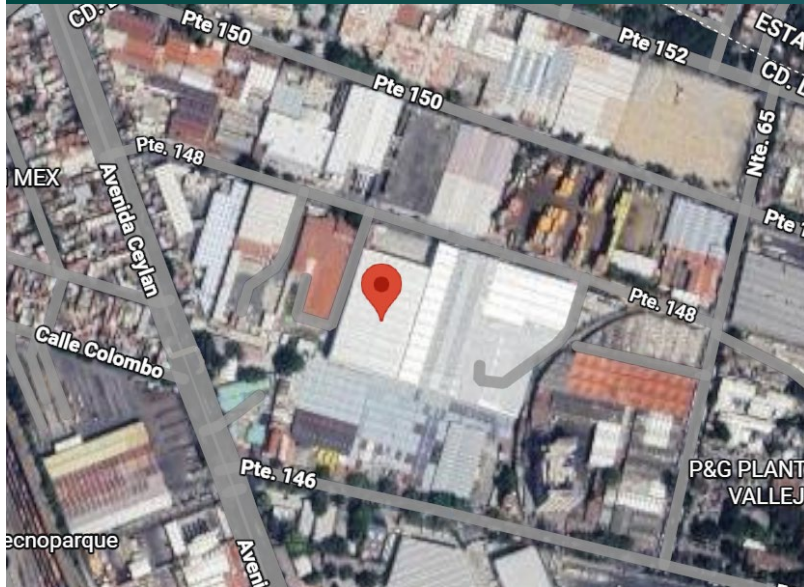


9,035.84 M2

Industrial Space- Available Q2 2026



Prologis Park Vallejo DC2



Poniente 148 No. 923, Industrial Vallejo, Mexico City, MEX, Mexico 02300

LOCATION

- Located within Mexico City's Vallejo sub-market.
- 12-14km to Condesa, Roma, Polanco, Reforma.
- Excellent access roads.
- Strong labor pool
- <https://maps.app.goo.gl/bAFWvBJJCV6KLCW6A>

KEY FEATURES

- Available Area: 97,261.00 SF / 9,035.84 SM
- 11 Dock Doors with levelers.
- 1 Drive In Door.
- 10 Parking Slots
- Minimum Clear Height: 35ft / 10.8m
- 225 Available KVAs

ADVANTAGES

- Close proximity to main roads and public transportation
- Prime location near top zip codes in the city
- No restriction on heavy transportation flow

Get to know our services:
prologisessentials.com

9,035.84 M2

Industrial Space- Available Q2 2026

Prologis Park Vallejo DC2

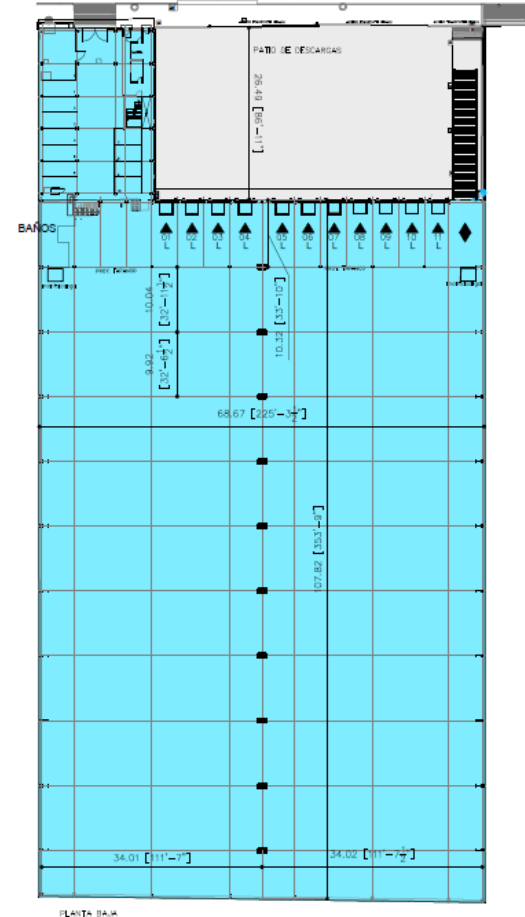
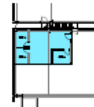
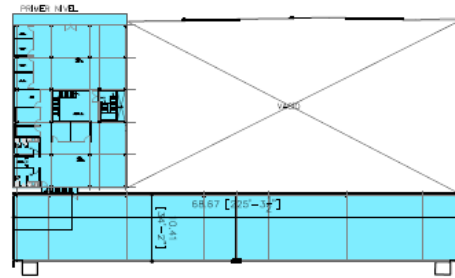
Ana Bertha

Del Real
adelreal@prologis.com
Cel +52 56 4166 8709
Paseo de los Tamarindos 90
Torre 2 Piso 22
Bosques de las Lomas
CDMX, 05120 México

Patricio

Estevez
pestevez@prologis.com
Cel +52 55 1105 2975
Paseo de los Tamarindos 90
Torre 2 Piso 22
Bosques de las Lomas
CDMX, 05120 México

Marketing Plan



PROLOGIS VALLEJO DC2

Industrial Vallejo, Azcapotzalco, CDMX

AVAILABLE AREA:	80,191 SF
OFFICES:	8,535 SF 2 LEVELS
CLEAR HEIGHT:	40'
PARKING:	10
DOCK HIGH DOORS:	11
DRIVE IN DOORS:	1
DOCK LEVELERS:	11

- LEGEND:
- AVAILABLE
 - UNDER CONSTRUCTION
 - PLANNED
 - LEASED
 - NON PLO BUILDING
 - LAND
 - WATER
 - CONCRETE
 - EV PARKING
 - PROLOGIS GREEN
- ▶ - DOCK POSITION
▶ - DOCK POSITION W/ LEVELER
▷ - FUTURE DOCK POSITION
◆ - DRIVE-IN DOOR

No warranty or representation, expressed or implied, is made as to the accuracy of the information contained herein, and same is submitted subject to error and omissions.