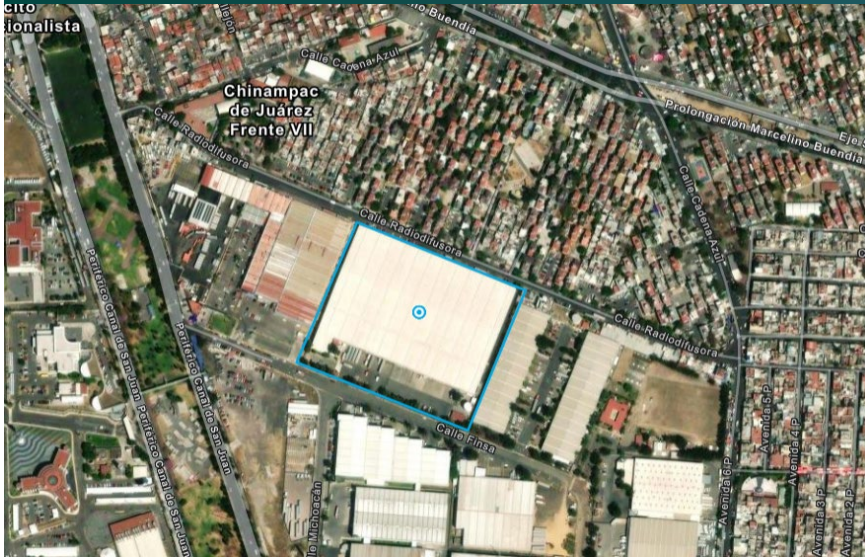


# 146,572 SQF



Espacio Industrial Immediately Available

## Prologis Park Finsa Iztapalapa Building 12



Av. Michoacán # 20. Col. Renovación Iztapalapa CDMX  
09209

### LOCATION

- Located in one of the main areas of the Mexico City Iztapalapa submarket.
- Direct Access to key access roads in the city.
- Highly qualified workforce available.
- <https://maps.app.goo.gl/qPh81RM9Wkw4rmw57>

### INSTALLATIONS

- Rentable Area: 146,572 SQF / 13616.98 SQM
- Office Area: 10,725.16 SQF / 996.40 SQM
- 11 Dock High Doors / 1 Drive-In Door.
- Fire Suppression: Hose Cabinets and sprinklers.
- Clear height: 31.04 pies / 9.46 m

### ADVANTAGES

- Within an industrial park.
- Controlled Access systems.
- Full dedicated Prologis customer experience teams.
- Privileged location for logistic work.

**Conoce nuestros servicios:**  
[prologisessentials.com](https://www.prologisessentials.com)

# 146,572 SQF



Espacio Industrial Immediately Available

## Prologis Park Finsa Iztapalapa Building 12

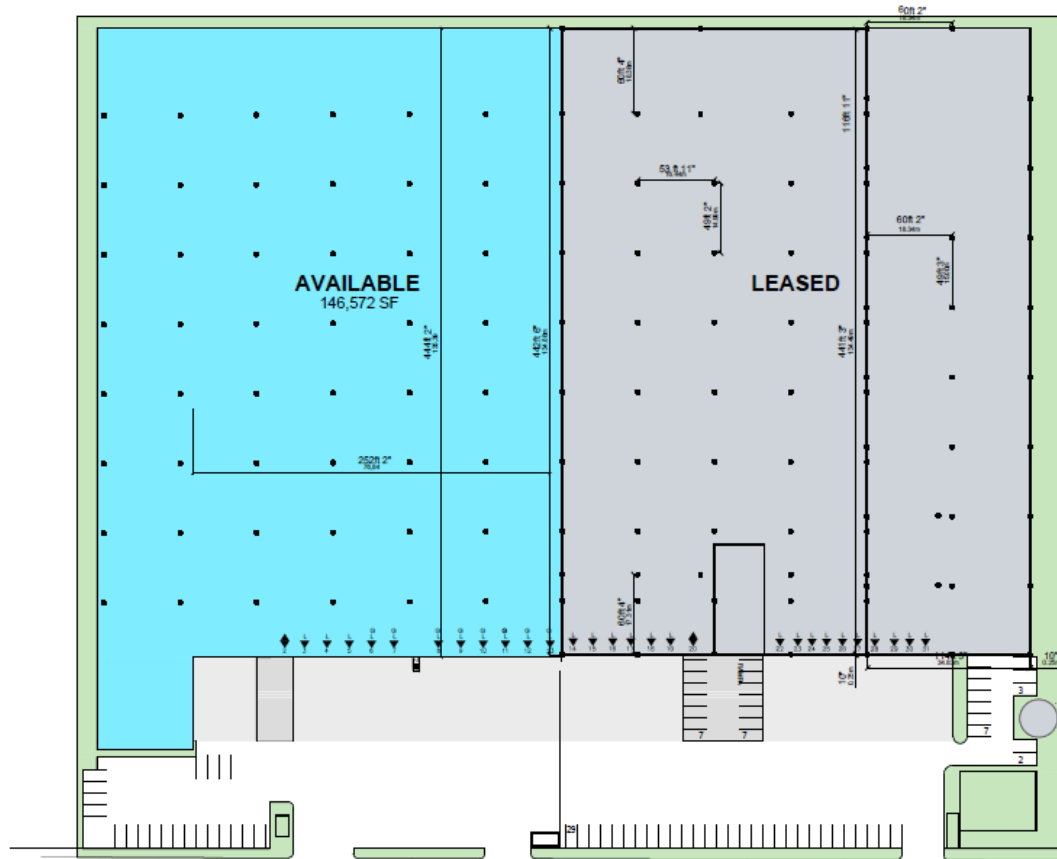
### Marketing Plan

#### Ana Bertha

Del Real  
adelreal@prologis.com  
Cel +52 56 4166 8709  
Paseo de los Tamarindos 90  
Torre 2 Piso 22  
Bosques de las Lomas  
CDMX, 05120 México

#### Patricio Estévez

pestevez@prologis.com  
Cel +52 55 1105 2975  
Paseo de los Tamarindos 90  
Torre 2 Piso 22  
Bosques de las Lomas  
CDMX, 05120 México



### PROLOGIS PARK IZTAPALAPA

Iztapalapa

AVAILABLE AREA:	146,572 SF
OFFICES:	10,725 SF
CLEAR HEIGHT:	31' 4"
PARKING:	23
DOCK HIGH DOORS:	11
DRIVE IN DOORS:	1
DOCK LEVELERS:	11

#### LEGEND:

- AVAILABLE
- UNDER CONSTRUCTION
- PLANNED
- LEASED
- NON PLD BUILDING
- LAND
- WATER
- CONCRETE
- EV PARKING
- PROLOGIS GREEN

- ▼ = DOCK POSITION
- ▼ = DOCK POSITION W/ LEVELER
- ▽ = FUTURE DOCK POSITION
- ◆ = DRIVE-IN DOOR



No warranty or representation, expressed or implied, is made as to the accuracy of the information contained herein, and same is submitted subject to error and omissions.